



## USER'S MANUAL





# CONTENTS

|       |                              |    |
|-------|------------------------------|----|
| I.    | SAFETY .....                 | 4  |
| II.   | YOUR SCOOTER .....           | 7  |
| III.  | BATTERIES AND CHARGING ..... | 14 |
| IV.   | OPERATION .....              | 18 |
| V.    | COMFORT ADJUSTMENTS.....     | 19 |
| VII.  | BASIC TROUBLESHOOTING .....  | 20 |
| VIII. | CARE AND MAINTENANCE .....   | 22 |



# I. SAFETY

## PRODUCT SAFETY SYMBOLS

The symbols below are used on the scooter to identify warnings, mandatory actions, and prohibited actions. It is very important for you to read and understand them completely.

**NOTE: There are more warnings identified and explained in the Consumer Safety Guide that is included with your scooter. Please become familiar with all the warnings and safety information found in the Consumer Safety Guide and refer to this resource often.**



Read and follow the information in the owner's manual.



Fully charge batteries before operating.

Remove key from an unattended scooter.



Does not meet ISO 7176-19 standards for occupied transport in a motor vehicle.  
When traveling in a motor vehicle, do not sit in your scooter.

# I. SAFETY

## GENERAL



**MANDATORY!** Do not operate your new scooter for the first time without completely reading and understanding this owner's manual and the Consumer Safety Guide.

Your scooter is a state-of-the-art life-enhancement device designed to increase mobility. We provide an extensive variety of products to best fit the individual needs of the scooter user. Please be aware that the final selection and purchasing decision regarding the type of scooter to be used is the responsibility of the scooter user, who is capable of making such a decision.

The contents of this manual are based on the expectation that a mobility device expert has properly fitted the scooter to the user.

There are certain situations, including some medical conditions, where the scooter user will need to practice operating the scooter in the presence of a trained attendant. A trained attendant can be defined as a family member or care professional specially trained in assisting a scooter user in various daily living activities.

As you begin using your scooter during daily activities, you will probably encounter situations in which you will need some practice. Simply take your time and you will soon be in full and confident control as you maneuver through doorways, on and off elevators, up and down ramps, and over moderate terrain.

Additional general information can be found on the supplemental information sheets and booklets included in your Owner's Package. Please fully read and review the information, and keep it readily available for future reference.

Below are some precautions, tips, and other safety considerations that will help you become accustomed to operating the scooter safely.

### **PRE-RIDE SAFETY CHECK**

Get to know the feel of your scooter and its capabilities. We recommend that you perform a safety check before each use to make sure your scooter operates smoothly and safely.

#### **Perform the following inspections prior to using your scooter:**

- Check the condition of the tires. Make sure they are not damaged or excessively worn.
- Check to ensure all tires are inflated to the proper psi/bar/kPa air pressure rating.
- Check all electrical connections. Make sure they are tight and not corroded.
- Check all harness connections. Make sure they are secured properly.
- Check the brakes to ensure they operate properly.
- Check the battery condition meter to ensure the batteries are fully charged.
- Ensure the manual freewheel lever is in drive mode before sitting on the scooter.

If you discover a problem, contact your authorized Orthoquad dealer for assistance.

# I. SAFETY

## **BRAKING INFORMATION**

Your scooter is equipped with these powerful brake systems:

**Regenerative:** Uses electricity to rapidly slow the vehicle when the throttle control lever returns to the center/stop position.

**Disc Park Brake:** Activates mechanically after regenerative braking slows the vehicle to near stop or when power is removed from the system for any reason.

**Handbrake:** This lever provides you with emergency stopping power. See II. "Your Scooter."

## II. YOUR SCOOTER

### TILLER CONSOLE

The tiller console houses all controls needed to drive your scooter, including the throttle control lever, forward-reverse switch, hi-low switch, and the handbrake. See figure 1.



**PROHIBITED!** Do not expose the tiller console to moisture. In the event that the tiller console does become exposed to moisture, do not attempt to operate your scooter until the tiller console has dried thoroughly.

#### IDENTIFICATION KEY

- |                               |                             |
|-------------------------------|-----------------------------|
| 1. LCD Screen                 | 10. Key Switch              |
| 2. Handbrake                  | 11. Mirror                  |
| 3. Parking Brake              | 12. Throttle Control        |
| 4. High Beam/Low Beam Switch  | 13. Forward-Reverse Switch  |
| 5. Turn Signal Switch         | 14. Hi-Low Switch           |
| 6. Left Turn Signal Position  | 15. Lights Switch           |
| 7. Turn Signal Off Position   | 16. Full Lights Position    |
| 8. Right Turn Signal Position | 17. Running Lights Position |
| 9. Horn Buttons               | 18. Lights Off Position     |

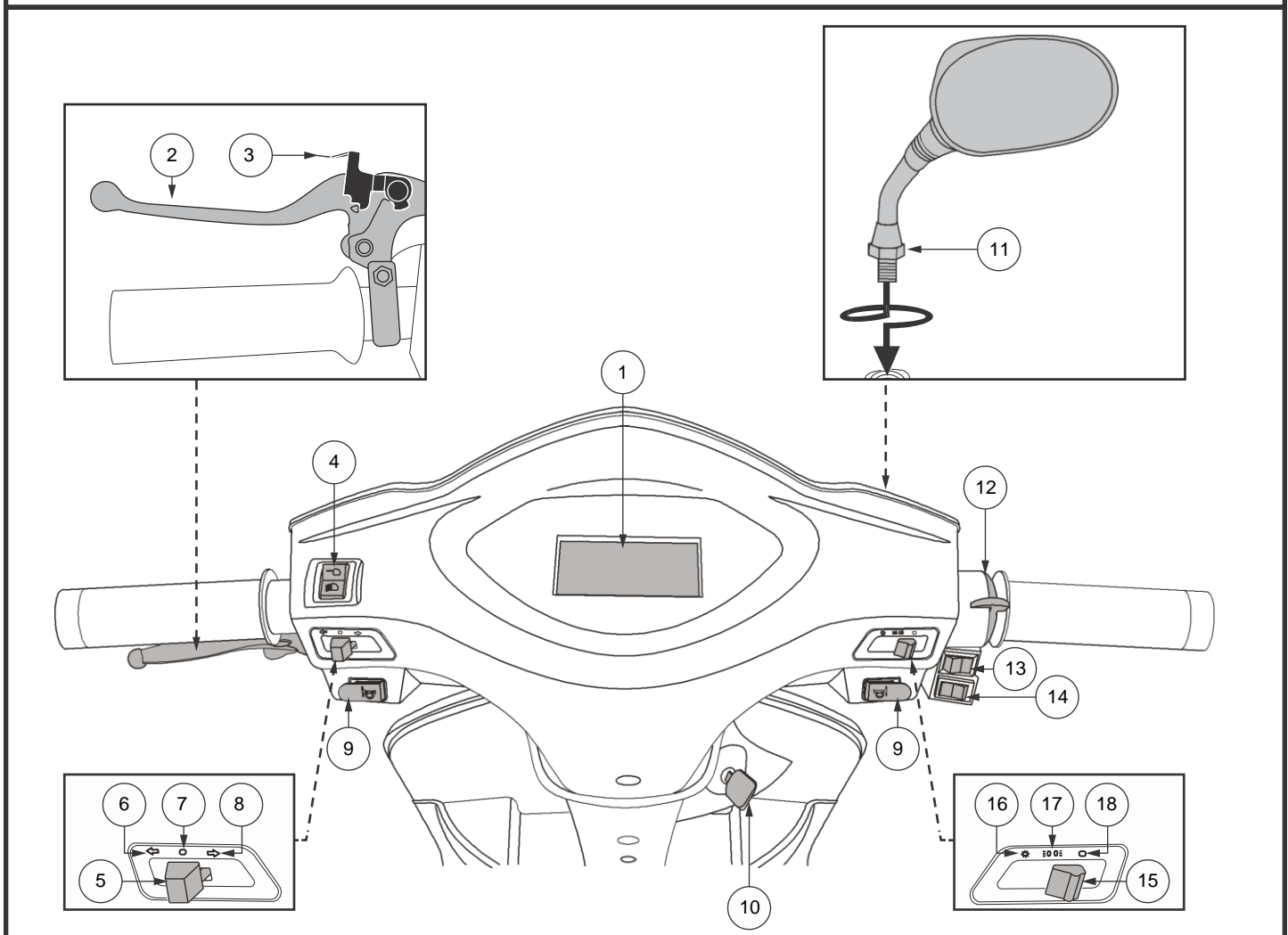


Figure 1. Tiller Console

## II. YOUR SCOOTER

### Hi-Low Switch

This switch toggles the scooter's speed between HIGH and LOW. Press the **Hi-Low** switch to the "H" position to set the speed adjustment to High. Press the **Hi-Low** switch to the "L" position to set the speed adjustment to Low.

### Forward-Reverse Switch

This switch controls the driving direction of your scooter. Press the **Forward-Reverse** switch to the "F" position to drive forward. Press the **Forward-Reverse** switch to the "R" position to drive in reverse.

### Throttle Control / Accelerating and Decelerating

The throttle is found on the right-side hand grip on the handlebars. Turn the grip forward to accelerate. To decelerate, release the grip. Don't over-rotate the accelerator, as this could damage the battery and electrical components.

### Handbrake Lever

This lever provides you with emergency stopping power. When in motion, release the throttle control lever and gently squeeze the handbrake lever to come to a stop. Be advised that using the handbrake lever to stop may cause the scooter to stop abruptly.



**WARNING!** The handbrake is intended for use only as an emergency brake and/or parking brake.

### Parking Brake

To engage the parking brake, squeeze the handbrake lever, then press the parking brake lever toward the handbrake to latch it in place. Squeeze the handbrake lever to release the parking brake when ready to resume movement.

**NOTE:** *When the parking brake is engaged, your scooter will not operate.*

### Horn Buttons

These buttons activate a warning horn. Your scooter must be powered up for the horn to be operational. Do not hesitate to use the warning horn when doing so may prevent accident or injury.

### Heated Grips (OPTIONNAL)

Press the heated grips button to activate the system. The system indicator light will illuminate on the right side. There two levels of adjustment, press I for low level, press II for high level. Select O to turn heating system off.





## II. YOUR SCOOTER

### Turn Signal Buttons

Switch the turn signal button in the appropriate direction to activate it. The turn signal lights will flash on your scooter.

After toggling the turn signal switch, it will return to the center neutral position.

Press down on the turn signal button to turn off the turn signals.

### Lights Switch

The lights switch offers both a running light and a full light option.

To activate the scooter's running lights, switch the headlights activation switch to the center position. The tail lights and the low front light will turn on.

To activate the full lights, switch the headlights activation switch to the far left position. In addition to the low light and tail lights, the headlight will engage.

To turn the lighting system off, switch the activation switch back to the far right position.

### High Beam/Low Beam Switch

When the Lights Switch is in the full light position, your scooter will engage the high beam or the low beam headlight.

Switch the High Beam/Low Beam Switch up to engage the high beam, or down to engage the low beam.



**WARNING!** Scooter users are required to use their lights when visibility is restricted—day or night.

### LCD SCREEN + SPEED

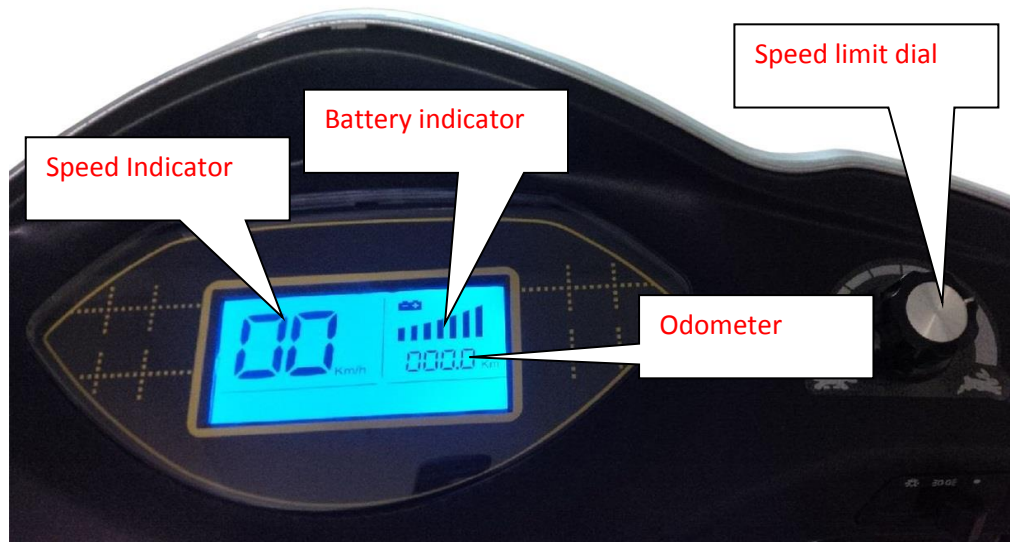


Figure 2. Head Tiller Console

## II. YOUR SCOOTER

### Speed Limit Dial See (See Figure 2.)

The speed limit dial is located on the top of the tiller

- When the speed limit dial is set to MAX, the **DISCOVERY** will drive at approximately 22 km/hr.
- When the speed limit dial is set to MIN, the **DISCOVERY** will drive at approximately 3 km/hr.

Do not change the speed limit dial setting while the **DISCOVERY** is moving.

#### **Note:**

Set the speed limit dial to MIN:

- Until you get used to driving your new **DISCOVERY** and When driving the **DISCOVERY** inside a building or in a crowded area.

### Speed Indicator (See Figure 2.)

The LCD Screen displays your current traveling speed. The Hi-Low setting determines the maximum scooter speed. When set to Low, the speed will be half of the maximum speed at the Hi setting.

### Battery Condition Indicator (See Figure 2.)

When the key is turned to the “on” position, the LED indicator gives an approximate reading of battery strength.

### Odometer (See Figure 2.)

When the key is turned to the “on” position, The LCD Screen will initially display the odometer.

### Off-board Charger Port

The off-board charger power cord, when plugged into the charger power cord receptacle and a standard electrical outlet, charges the scooter’s batteries. See **figure 3**. The off-board charger port will be located at the front of the rear shroud, below the seat.

### Charger Power Cord Receptacle

The 3-pin end of the charger power cord plugs into the receptacle. There is a protective rubber flap that, when pressed into place, fits over the receptacle to shield it from dirt, debris, moisture, or damage.

### Electrical System Fuses

Your scooter is equipped with a series of electrical system fuses, which help protect the off-board charging system, key switch, and lighting system from receiving an overload of electrical current. These fuses are located in a compartment within the rear shroud, below the seat.

**NOTE: Keep all electrical areas clean and free of moisture and foreign material.**

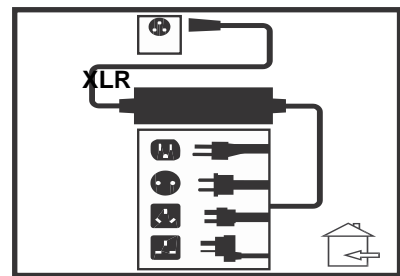
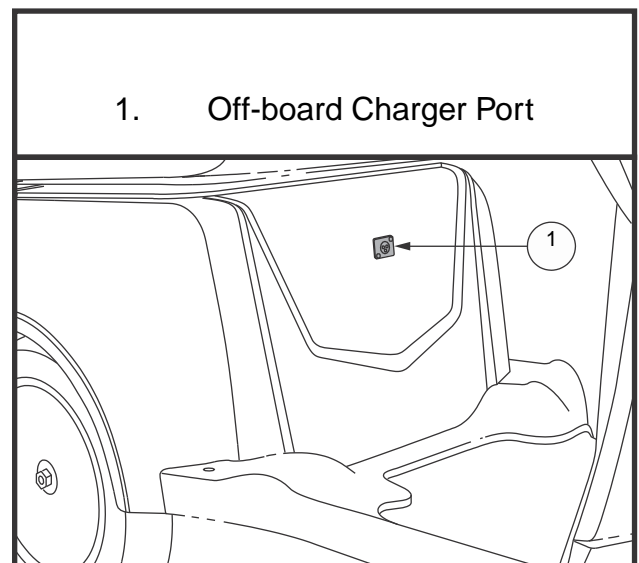


Figure 3. Off-board Battery Charger

### IDENTIFICATION KEY



## II. YOUR SCOOTER

### Key Switch

Insert the key into the key switch and turn it clockwise to power up (turn on) your scooter. Turn the key counterclockwise to power down (turn off) your scooter.



**WARNING!** If the key is turned to the “off” position while your scooter is in motion, the electronic brakes will engage and your scooter will come to an abrupt stop!

### Mirror Positioning and Adjustment

For information on positioning and adjusting your mirror, see V. “Comfort Adjustments.”

### REAR COMPONENTS

The manual freewheel lever and motor/transaxle assembly are located on your scooter as shown. See figure 4. The main circuit breaker (reset button) and batteries (not shown) are also located in the rear component section of your scooter.



**WARNING!** Before placing your scooter into or taking it out of freewheel mode, remove the key from the key switch. Never sit on a scooter when it is in freewheel mode. Never put a scooter in freewheel mode on any incline.

### Manual Freewheel Lever

Whenever you need or want to push your scooter for short distances, you can put it in freewheel mode.

1. Remove the key from the key switch.
2. Push forward on the manual freewheel lever to disable the drive system and the brake system. This will enable you to push the scooter.
3. Pull back on the manual freewheel lever to reengage the drive and the brake systems, and take your scooter out of freewheel mode.



**WARNING!** When your scooter is in freewheel mode, the braking system is disengaged.

- „ Disengage the drive motors only on a level surface.
- „ Ensure the key is removed from the key switch.
- „ Stand to the side of the scooter to engage or disengage freewheel mode. Never sit on a scooter to do this.
- „ After you have finished pushing your scooter, always return it to the drive mode to lock the brakes.

**NOTE:** If the scooter is placed in freewheel mode (manual freewheel lever forward) while the key is in the “on” position, the scooter will not run until the manual freewheel lever is pushed backward and the key is turned to the “off” position, then back to the “on” position.

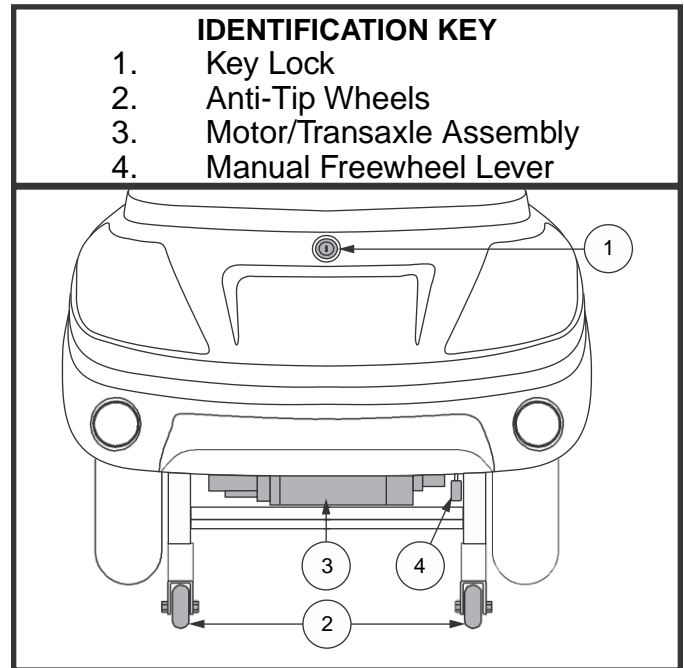


Figure 4. Rear Components

## II. YOUR SCOOTER

### Motor/Transaxle Assembly

The motor/transaxle assembly is an electromechanical unit that converts electrical energy from your scooter's batteries into the controlled mechanical energy that drives the scooter's wheels.

### Anti-Tip Wheels

The anti-tip wheels are an integral and important safety feature of your scooter. They are bolted to the frame at the rear of the scooter.



**PROHIBITED!** Do not remove anti-tip wheels or modify your scooter in any way that is not authorized by your provider.



**WARNING!** The anti-tip wheels may cause interference with the smooth transition of your scooter when ascending or descending a curb. Contact your authorized Orthoquad dealer for more information.

### Storage Compartments

Your scooter is equipped with two storage compartments. One is located on the tiller beneath the LCD Display, and the other is a storage compartment located in the rear shroud below the seat.

#### To access the rear storage compartment:

1. Ensure that your scooter is powered down and the key is removed from the key switch before accessing rear storage.
2. Place the key into the key lock and turn it clockwise to unlatch the seat, then flip the seat forward to access the rear storage compartment.
3. To close the storage compartment, disengage the seat support rod, and slowly lower the seat back into position. Remove the key from the key lock.

**WARNING:** Use extreme caution when flipping the seat up. The seat on your scooter is heavy. If you are unable to lift it comfortably, be sure to get help.



**WARNING:** Always engage the seat support rod when lifting the seat for any reason. Failure to do so could result in personal injury and/or product damage.

**WARNING:** No personal property, pets, or valuables should be stored in any storage compartment and left unattended.

**NOTE:** Prior to latching, ensure that the keys are not in the storage compartment.

**NOTE:** Ensure the seat is properly latched again before operating.

## II. YOUR SCOOTER

### **Batteries**

The batteries store electrical energy that powers your scooter. They are located in the rear shroud beneath the scooter's rear storage compartment. See III. "Batteries and Charging" for information on how to charge your scooter batteries.

### **Main Circuit Breaker**

When the voltage in the batteries becomes low or your scooter is heavily strained because of excessive loads, the main circuit breaker may trip to protect the motor and electronics from damage. When the breaker trips, the entire electrical system shuts down.

Reset lever flips down when the breaker trips. Allow a minute or so for the electronics to "rest."

Flip up the seat to access your scooter's rear storage compartment.

Locate the circuit breaker access point (cut-out) in the lower part of the rear storage compartment.

Push the reset lever up until you hear a click, or push in the reset button to reset the breaker.

If the breaker trips frequently, you may need to charge the batteries more often or have your authorized Orthoquad dealer perform a load test on the batteries.

If the main circuit breaker trips repeatedly, see your authorized Orthoquad dealer for service.

***NOTICE: If you are preparing the scooter for transport or service, or if there is a situation that requires you to manually shut down the electrical system, press the manual shut-off button on the circuit breaker. This will cut all power to the scooter.***

# III. BATTERIES AND CHARGING

## BATTERIES AND CHARGING

Your scooter requires two long-lasting, 12-volt, deep-cycle batteries that are sealed and maintenance-free. They are recharged by an off-board charging system.

Charge your scooter's batteries for at least 8 to 14 hours prior to using it for the first time. Keep the batteries fully charged to keep your scooter running smoothly.

## READING YOUR BATTERY VOLTAGE

The battery condition meter on the tiller console indicates the approximate strength of your batteries. To ensure the highest accuracy, the battery condition meter should be checked while operating your scooter at full speed on a dry, level surface. Please refer to the "Battery Condition Indicator" section in II. "Your Scooter."

## CHARGING YOUR BATTERIES



**PROHIBITED!** Removal of grounding prong can create electrical hazard. If necessary, properly install an approved 3-pronged adapter to an electrical outlet having 2-pronged plug access.



**PROHIBITED!** Never use an extension cord to plug in your battery charger. Plug the charger directly into a properly wired standard electrical outlet.



**PROHIBITED!** Do not allow unsupervised children to play near the scooter while the batteries are charging. We recommend that you do not charge the batteries while the scooter is occupied.



**MANDATORY!** Read the battery charging instructions in this manual and in the manual supplied with the battery charger before charging the batteries.



**WARNING!** Explosive gases may be generated while charging the batteries. Keep the scooter and battery charger away from sources of ignition such as flames or sparks and provide adequate ventilation when charging the batteries.

**WARNING!** You must recharge your scooter's batteries with the supplied off-board charger. Do not use an automotive-type battery charger.

**WARNING!** Inspect the battery charger, wiring, and connectors for damage before each use. Contact your authorized Orthoquad dealer if damage is found.



**WARNING!** Do not attempt to open the battery charger case. If the battery charger does not appear to be working correctly, contact your authorized Orthoquad dealer.

**WARNING!** If the battery charger is equipped with cooling slots, then do not attempt to insert objects through these slots.

**WARNING!** Be aware that the battery charger case may become hot during charging. Avoid skin contact and do not place on surfaces that may be affected by heat.



**WARNING!** If your battery charger has not been tested and approved for outdoor use, then do not expose it to adverse or extreme weather conditions. If the battery charger is exposed to adverse or extreme weather conditions, then it must be allowed to adjust to the difference in environmental conditions before use indoors. Refer to the manual supplied with the battery charger for more information.

# III. BATTERIES AND CHARGING

## FREQUENTLY ASKED QUESTIONS

### **How does the charger work?**

When your scooter's battery voltage is low, the charger works harder, sending more electrical current to the batteries to bring up their charge. As the batteries approach a full charge, the charger sends less and less electrical current. When the batteries are fully charged, the current sent from the charger is at nearly zero amperage. Therefore, when the charger is plugged in, it maintains the charge on your scooter's batteries, but does not overcharge them. Refer to the manual supplied with the battery charger for charging instructions.

### **Can I use a different charger?**

Chargers are selected precisely for particular applications and are especially matched to the type, size, and chemical formulation of specific batteries. For the safest and most efficient charging of your scooter's batteries, we recommend use of the charger supplied as original equipment with your product only. Any charging method resulting in batteries being charged individually is especially prohibited.

### **What if my scooter's batteries will not charge?**

Ensure the red (+) and black (-) battery cables are connected properly to the battery terminals. Ensure both ends of the charger power cord are inserted fully.



## III. BATTERIES AND CHARGING

### **How often must I charge the batteries?**

Two major factors must be considered when deciding how often to charge your scooter's batteries:  
All day use on a daily basis.  
Infrequent or sporadic use.

With these considerations in mind, you can determine how often and for how long you should charge your scooter's batteries. The battery charger was designed so that it will not overcharge your scooter's batteries. However, you may encounter some problems if you do not charge your batteries often enough and if you do not charge them on a regular basis. Following the guidelines below will provide safe and reliable battery operation and charging.

If you use your scooter daily, charge its batteries as soon as you finish using it for the day. Your scooter will be ready each morning. We recommend that you charge your scooter's batteries for at least 8 to 14 hours after daily use. We recommend that you charge the batteries for an additional 4 hours after the battery charger indicates that charging is complete.

If you use your scooter once a week or less, charge its batteries at least once a week for at least 24 hours.

***NOTE: Keep your batteries fully charged and avoid deeply discharging your batteries. Refer to the manual supplied with the battery charger for charging instructions. We recommend charging your batteries for at least 48 continuous hours once per month to improve battery performance and battery life.***

### **How can I ensure maximum battery life?**

Fully charged deep-cycle batteries provide reliable performance and extended battery life. Keep your scooter's batteries fully charged whenever possible. Protect your scooter and batteries from extreme heat or cold. Batteries that are regularly and deeply discharged, infrequently charged, stored in extreme temperatures, or stored without a full charge may be permanently damaged, causing unreliable performance and limited service life.

***NOTE: To extend battery life, always turn off scooter and remove the key when not in use.***

### **How can I get maximum range or distance per charge?**

Rarely will you have ideal driving conditions—smooth, flat, hard driving surfaces with no wind or curves. Often, you will face hills, sidewalk cracks, uneven and loosely packed surfaces, curves, and wind, all of which affect the distance or running time per battery charge. Below are a few suggestions for obtaining the maximum range per battery charge.

Always fully charge your scooter's batteries prior to daily use.

Plan your route ahead to avoid as many hills, cracked, broken, or soft surfaces as possible.

Limit your baggage weight to essential items.

Try to maintain an even speed while your scooter is in motion.

Avoid stop-and-go driving.

We recommend charging your batteries for at least 48 continuous hours once per month to improve battery performance and battery life.

Make sure all harness connections are secured properly.



## III. BATTERIES AND CHARGING

### What type and size of battery should I use?

Your scooter requires two deep-cycle batteries. We recommend only sealed, maintenance-free types such as AGM or Gel-Cell. Do not use wet-cell batteries, which have removable caps. Refer to the specifications table for size as batteries differ depending on manufacture.



**WARNING!** Corrosive chemicals are contained in batteries. Use only AGM or Gel-Cell batteries to reduce the risk of leakage or explosive conditions.

**NOTE:** Sealed batteries are not serviceable. Do not remove the caps.

### Why do my new batteries seem weak?

Deep-cycle batteries employ a different chemical technology than that used in car batteries, nickel-cadmium batteries (nicads), and other common battery types. Deep-cycle batteries are specifically designed to provide power, drain down their charge, and then accept a relatively quick recharge (8 to 14 hours).

We work closely with our battery manufacturer to provide batteries that best suit your scooter's specific electrical demands. Fresh batteries are shipped fully charged to our customers. During shipping, the batteries may encounter temperature extremes that can influence their initial performance. Heat diminishes the charge on the battery; cold slows the available power and extends the time needed to recharge the battery.

It may take a few days for the temperature of your scooter's batteries to stabilize and adjust to their new room or ambient temperature. More importantly, it takes a few charging cycles (partial draining followed by full recharging) to establish the critical chemical balance that is essential to a deep-cycle battery's peak performance and long life.

# IV. OPERATION

## BEFORE GETTING ONTO YOUR SCOOTER

Have you fully charged the batteries? See III. "Batteries and Charging."

Is the manual freewheel lever in the drive (rearward) position? Never leave the manual freewheel lever pushed forward unless you are manually pushing your scooter.

## GETTING ONTO YOUR SCOOTER

1. Make certain that the key is removed from the key switch.



**WARNING!** Never attempt to get onto or off of your scooter without first removing the key from the key switch. This will prevent the scooter from moving if accidental throttle control lever contact is made.

2. Stand at the side of your scooter.
3. Position yourself comfortably and securely in the seat.
4. Make certain that the seat is secured into position.
5. Make certain that your feet are safely on the floorboard.

**NOTE:** Prior to operating your scooter for the first time, reset the circuit breaker by pushing the circuit breaker switch down.

## PRE-RIDE ADJUSTMENTS AND CHECKS

Is the seat at the proper recline angle?

Is the seat secured into place?

Is the key fully inserted into the key switch and turned clockwise to the "on" position?

Does the scooter's horn work properly?

Is your proposed path clear of people, pets, and obstacles?

Have you planned your route to avoid adverse terrain and as many inclines as possible?

## OPERATING YOUR SCOOTER

**WARNING!** The following can adversely affect steering and stability while operating your scooter:

Holding onto or attaching a leash to walk your pet.

Carrying passengers (including pets).

Hanging any article from the tiller.

Towing or being pushed by another motorized vehicle.



**WARNING!** Tipping Risk! Avoid abrupt maneuvers at excessive speed. It is recommended that you set the speed adjustment dial to the lowest setting until you become familiar with scooter controls and operation.

**WARNING!** Scooter braking distances are greater on an incline than on the horizontal.

**WARNING!** Keep both hands on the tiller and your feet on the floorboard at all times while operating your scooter. This driving position gives you the most control over your vehicle.

- Set the speed adjustment switch to your desired speed.
- The throttle is found on the right-side hand grip on the handlebars. Turn the grip forward (away from you) to accelerate.
- The electromechanical disc park brake automatically disengages and the scooter accelerates smoothly to the speed you preselected.
- Pull on the left handgrip to steer your scooter to the left.
- Pull on the right handgrip to steer your scooter to the right.
- Move the tiller to the center position to drive straight ahead.
- To stop, release the grip (turn it towards you) The electronic brakes will automatically engage when your scooter comes to a stop.

## V. COMFORT ADJUSTMENTS

### MIRROR POSITION

#### To install the mirror:

1. Insert the threaded end of the mirror holder into the opening and rotate it clockwise until snug. **See figure 5.**
2. If necessary, rotate the nut clockwise to secure the mirror in place.

#### To adjust the mirror:

1. Position yourself in a seated driving position facing forward.
2. Adjust the mirror left, right, up, or down until you have a good line of sight behind you.

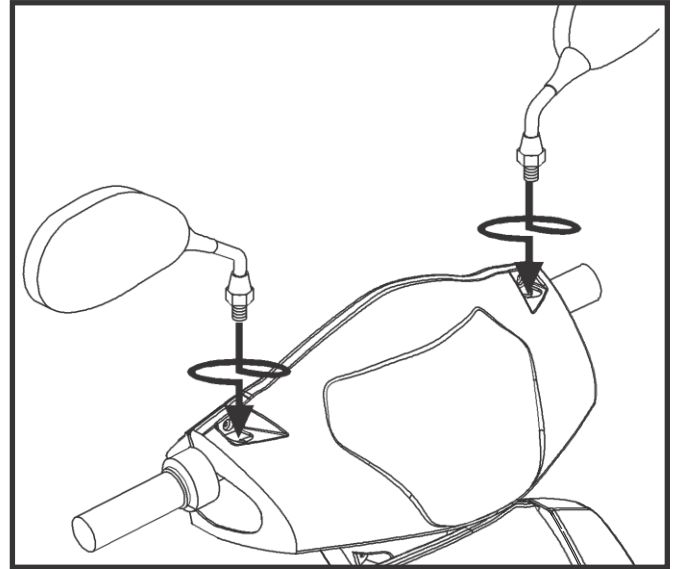


Figure 5 . Mirror Position Installation/Adjustment

## VII. BASIC TROUBLESHOOTING

### **What if all the systems on my scooter seem to be dead?**

Make certain that the key is in the “on” position.

Check that the batteries are fully charged.

Push in the main circuit breaker reset button. See “Your Scooter.”

Make certain that both battery harnesses and the front-to-rear harness are firmly connected.

### **What if my scooter does not move when I engage the throttle control lever?**

When the manual freewheel lever is pushed forward, the brakes are disengaged and all power to the motor/transaxle assembly is cut.

Push backward on the manual freewheel lever, turn the scooter off, then turn the scooter on to return to normal scooter operation.

### **What if the main circuit breaker repeatedly trips?**

If the main circuit breaker trips repeatedly, see your authorized Orthoquad dealer for service.

Charge the batteries more frequently. See IV. “Batteries and Charging.”

If the problem continues, have both of your scooter’s batteries load tested by your Orthoquad dealer.

You may also perform the load test yourself. Battery load testers are available at most automotive parts stores. Follow the directions supplied with the load tester.

### **What if the battery condition meter dips way down and the motor surges or hesitates when I engage the throttle control lever?**

Fully charge your scooter’s batteries. See IV. “Batteries and Charging.”

Have your authorized Orthoquad dealer load test each battery.

See the previous troubleshooting question for load testing the batteries yourself.

If you experience any problems with your scooter that you are not able to solve, immediately contact your authorized Orthoquad dealer for information, maintenance, and service.

## VIII. CARE AND MAINTENANCE

Your scooter requires a minimal amount of care and maintenance. If you do not feel confident in your ability to perform the maintenance listed below, you may schedule inspection and maintenance at your authorized Orthoquad dealer. The following areas require periodic inspection and/or care and maintenance.

### TIRE PRESSURE

If equipped with pneumatic tires, always maintain the psi/bar/kPa air pressure rating indicated on each tire.



**WARNING!** It is important that the psi/bar/kPa air pressure rating indicated on each tire be maintained in pneumatic tires at all times. Do not underinflate or overinflate your tires. Low pressure may result in loss of control, and overinflated tires may burst. Failure to maintain the psi/bar/kPa air pressure rating indicated on the tires at all times may result in tire and/or wheel failure.

Regularly inspect your scooter's tires for signs of wear.

### WHEEL REPLACEMENT

Contact your authorized Orthoquad dealer for replacement tires.

### EXTERIOR SURFACES

Bumpers, tires, and trim can benefit from an occasional application of a rubber or vinyl conditioner.



**WARNING!** Do not use a rubber or vinyl conditioner on the scooter's vinyl seat or tire tread, as this may cause them to become dangerously slippery.

### CLEANING AND DISINFECTION

Use a damp microfiber cloth and mild, non-abrasive cleanser to clean the plastic and metal parts of your scooter. Avoid using products that may scratch the surface of your scooter.

If necessary, clean your product with an approved disinfectant. Make sure the disinfectant is safe for use on your product before application.



**WARNING!** Follow all safety instructions for the proper use of the disinfectant and/or cleaning agent before applying it to your product. Failure to comply may result in skin irritation or premature deterioration of upholstery and/or scooter finishes.

### BATTERY TERMINAL CONNECTIONS

Make certain that the terminal connections remain tight and uncorroded.

The batteries must sit flat in the battery wells.

The battery terminals should face away from the seat post.

### WIRING HARNESSSES

Regularly check all wiring connections.

Regularly check all wiring insulation, including the charger power cord, for wear or damage.

Have your authorized Orthoquad dealer repair or replace any damaged connector, connection, or insulation that you find before using your scooter again.



**PROHIBITED!** Even though the scooter has passed the necessary testing requirements for ingress of liquids, you should keep electrical connections away from sources of dampness, including direct exposure to water or bodily fluids and incontinence. Check electrical components frequently for signs of corrosion and replace as necessary.



**WARNING!** Do not pull on electrical harnesses directly to detach them from the scooter. Always grasp the connector itself when disconnecting the harness to prevent wire damage.

## ABS PLASTIC SHROUDS

If your scooter has a body shroud with a **glossy finish**, the body shroud has been sprayed with a clear sealant coating. You can apply a light coat of car wax to help it retain its high-gloss appearance. If scooter has a body shroud with a **matte finish**, use **ONLY** products developed for matte- finish paint. Do not use wax, detail spray, ArmorAll®, or any product made for glossy paint.



**WARNING!** Carefully choose the correct product to protect the finish of your scooter's shroud(s). **ONLY** products developed for matte-finish paint should be used on shrouds with a matte finish. Failure to follow this warning may result in damage to the shroud's matte paint finish.

## AXLE BEARINGS AND THE MOTOR/TRANSAXLE ASSEMBLY

These items are all prelubricated, sealed, and require no subsequent lubrication.

## MOTOR BRUSHES

The motor brushes are housed inside of the motor transaxle/assembly. They should be inspected periodically for wear by your authorized Orthoquad dealer.

## CONSOLE, CHARGER, AND REAR ELECTRONICS

Keep these areas free of moisture.

Allow these areas to dry thoroughly if they have been exposed to moisture before operating your scooter again.

## BRAKE PADS

The brake pads on your scooter should be inspected periodically for wear. Once the pads reach 1/16-th of an inch or 2 mm in thickness, they should be replaced. If any of the brake pads needs to be replaced, then it is best to replace all the brake pads at the same time. Contact your authorized Orthoquad dealer for more information on replacing the brake pads.

## FUSE REPLACEMENT

**In the event a fuse should cease to work:**

1. Remove the fuse by pulling it out of its slot.
2. Examine the fuse to be sure it is blown. **See figure 6.**
3. Insert a new fuse of the same rating.



**WARNING!** The replacement fuse must exactly match the rating of the fuse being replaced. Failure to use properly rated fuses may cause damage to the electrical system.

## NYLON LOCK NUT REPLACEMENT

Any nylon insert lock nut removed during the periodic maintenance, assembly, or disassembly of the scooter must be replaced with a new nut. Nylon insert lock nuts should not be reused as it may cause damage to the nylon insert, resulting in a less secure fit. Replacement nylon insert lock nuts are available at local hardware stores or through your authorized Orthoquad dealer.

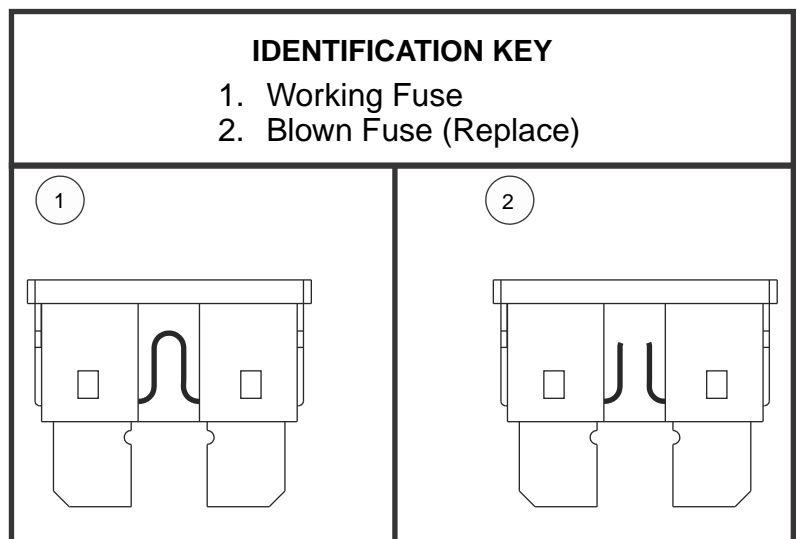


Figure 6. Fuse Replacement

## **STORAGE INSTRUCTIONS**

Always store in a dry area protected from freezing to avoid damage to the scooter and premature wear of the batteries.

Avoid exposure to rain, snow, ice, salt or stagnant water. Keep your scooter clean and dry.

Never expose the electronic components of the scooter to humidity (rain, snow, mist, or water from washing), as it may damage electronic circuits.

Always store your scooter with batteries fully charged. When storing the scooter for more than two weeks, charge the batteries and disconnect them.

During the storage, check the charge once a month and recharge the batteries as needed. You must complete a full charge cycle every month or damage to batteries can occur.

Avoid extreme temperature of hot and cold during storage. Freezing can damage low charged batteries and they may become unusable.





# NOTES

# NOTES



